

**SHOP MATERIAL LIST FOR 1 ASSEMBLY**

Mark	Size	Grade	No.	Length (mm)	Area (m <sup>2</sup> )	Weight (kg)	
B1	RHS300*300*12	S275	2	7225	17.015	1535.5	
B2	RHS300*300*12	S275	1	1600	1.580	141.1	
M1	L150*150*15	S275	4	230	0.586	30.9	
M2	L150*150*15	S275	1	270	0.171	9.1	
P3	PLT25*530	S235	2	530	1.230	110.3	
P6	PLT16*100	S235	8	150	0.264	12.9	
<b>Total</b>						<b>20.845</b>	<b>1839.7</b>

**GENERAL NOTES**

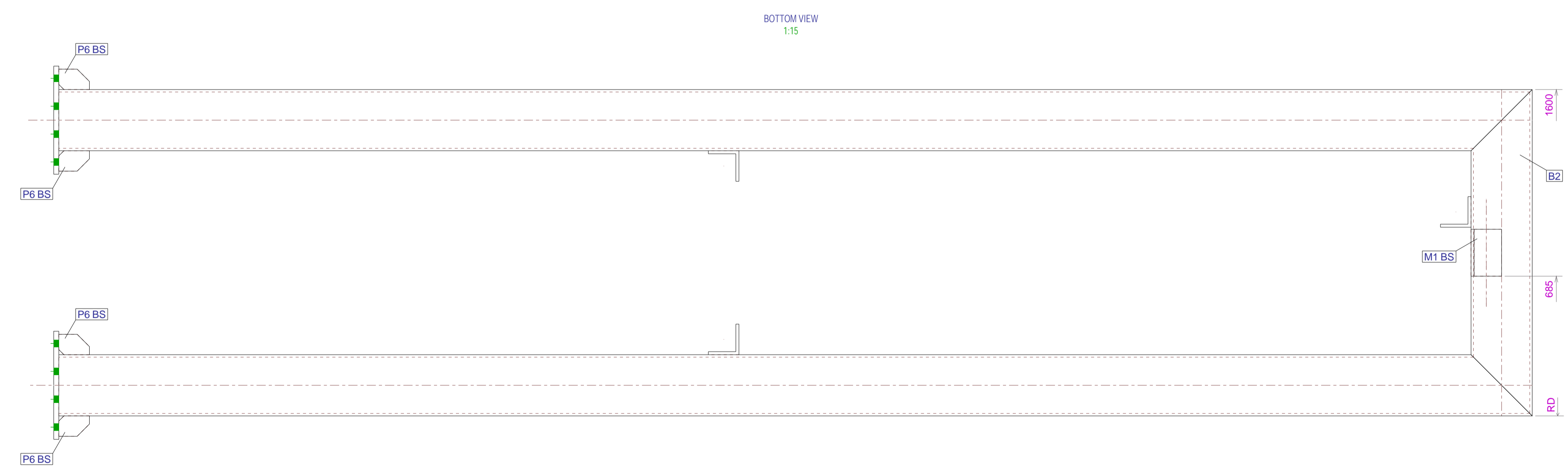
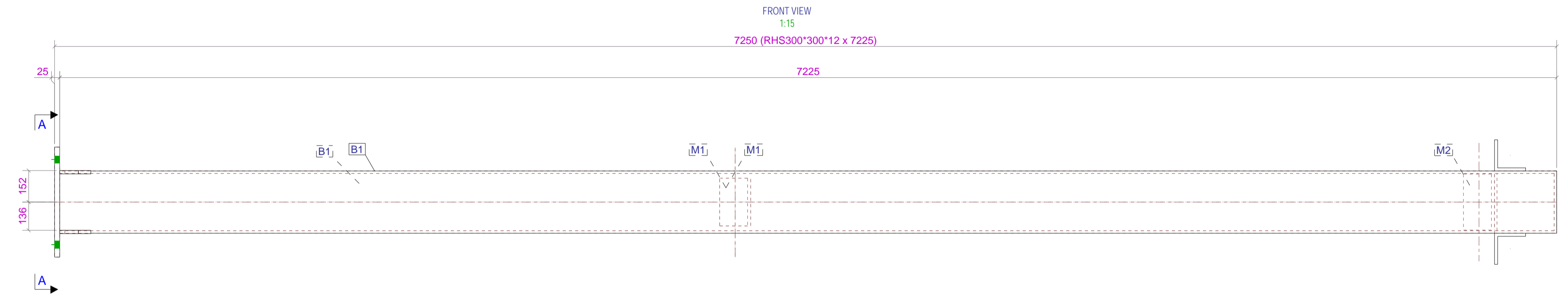
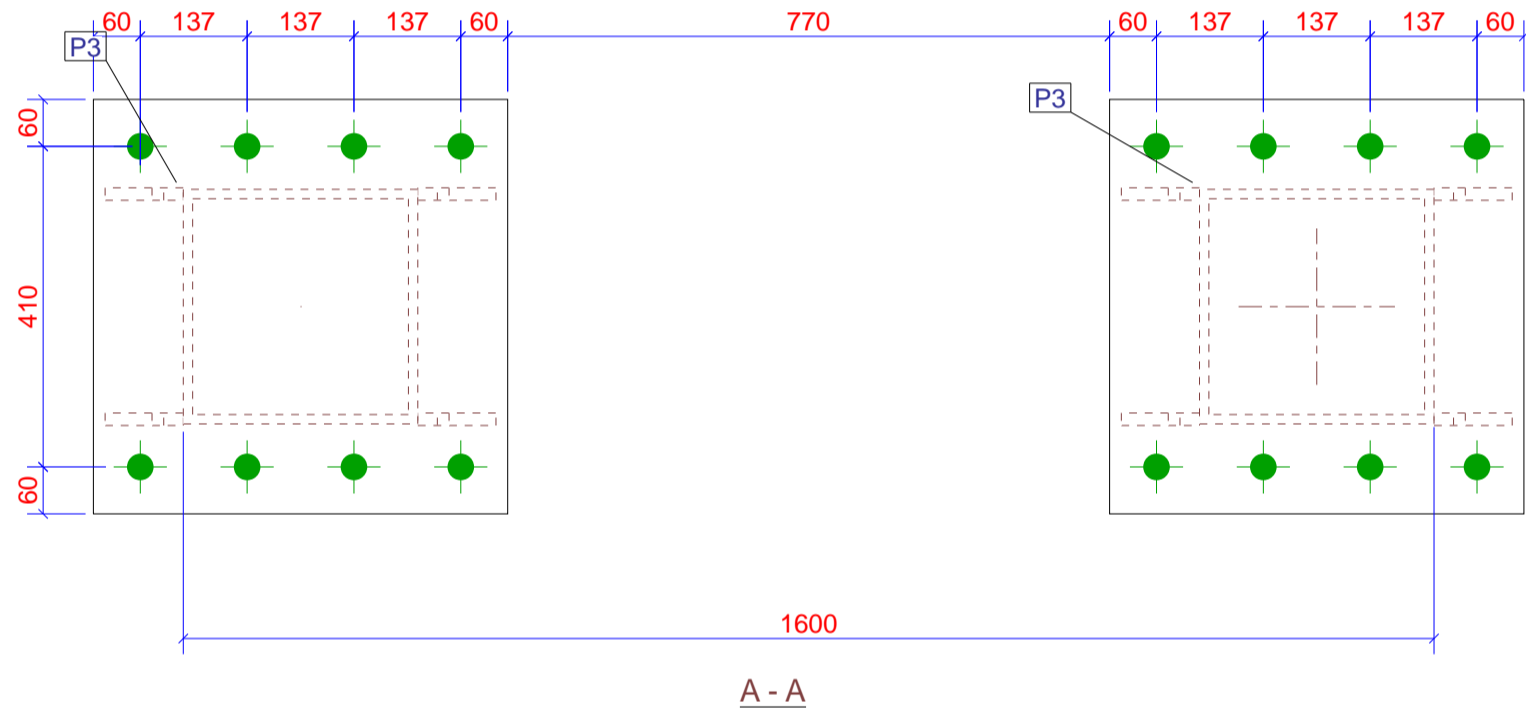
All Holes to be 22.0 Dia. UNO Slot hole length is to outside  
 All Welds to be 22.0 FW. UNO

All Steelwork Manufactured to:  
 BS EN 1090-2: Execution Class EXC2 UNO

FINISH: S.B. & PRIME  
 LOT: 0 QTY: 1  
 PHASE: 1 QTY: 1

**FABRICATION STATUS**

Sawn by:	_____	Date:	_____
Fabricated by:	_____	Date:	_____
Welded by:	_____	Date:	_____
Checked by:	_____	Date:	_____
Loaded by:	_____	Date:	_____



**1 No. RHS300\*300\*12 REQUIRED AS DRAWN MARKED AB1**

ASSEMBLY / SUB ASSEMBLY STATUS	
1	THIS IS IT'S OWN ASSEMBLY

REV MARK	DESCRIPTION	By	Date	By	Date
			CREATED		CHECKED

**BIM TEAM**  
 כשהנדסה וטכנולוגיה נפגשים

CLIENT: עיריית נתניה  
 DATE CREATED: 26.10.2021

DRAWN BY: פסל פלדה  
 EA

CONTRACT NO: 0010  
 DRAWING NO: [AB.1]  
 REV: 1